

For Sale Bonnie Doon Golf & Country Club



**4195 Aberarder Line
Camlachie (Sarnia)
Ontario**



- 27 picturesque holes on 248 acres
- Modern 6,050 sq ft Club House and Pro Shop
- Asking Price: ~~\$2,400,000~~ **Now \$2,100,000**

Gary Pollock

Broker

gary.pollock@dtzbarnicke.com

Kenn Poore

Broker

kenn.poore@dtzbarnicke.com

DTZ Barnicke

101 - 379 Dundas Street
London, Ontario, N6B 1V5, Canada

London Tel: 519 438 5588

Windsor Tel: 519 252 3076

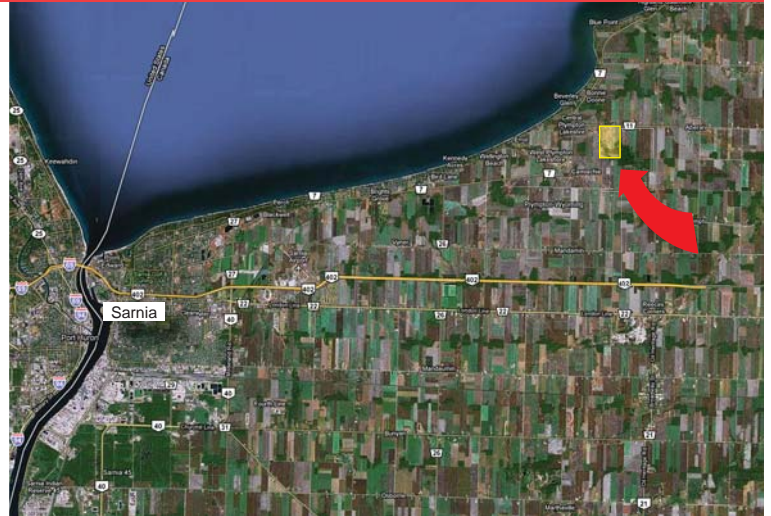
Sarnia Tel: 519 332 0135

Fax: 519 438 8979

www.dtzbarnicke.com

Property Details

- Located at 4195 Aberarder Line (Highway #11), in the Municipality of Camlachie, approximately 10 minutes north of Sarnia via Highway #7
- Total area: 248 acres
- Buildings: Well maintained 6,050 square foot Club House & Pro Shop, plus maintenance shed and ancillary buildings, as well as carts and equipment
- Asking ~~\$2,400,000~~ **Now \$2,100,000**
- Financial information to qualified buyers



Bonnie Doon Golf Course

The course is situated on the Egremont Land Rift, with its old-growth forest rolling terrain, winding creek and (7) ponds.

The “Black Heath” course is an 18 hole, 6,853 yard track with a slope of 133.

The “Ravines” is a challenging 9 hole 2,400 yard executive course.

Both courses are in excellent condition.



Gary Pollock

Broker

gary.pollock@dtzbarnicke.com

Kenn Poore

Broker

kenn.poore@dtzbarnicke.com

DTZ Barnicke

101 - 379 Dundas Street
London, Ontario, N6B 1V5, Canada

London Tel: 519 438 5588

Windsor Tel: 519 252 3076

Sarnia Tel: 519 332 0135

Fax: 519 438 8979

www.dtzbarnicke.com