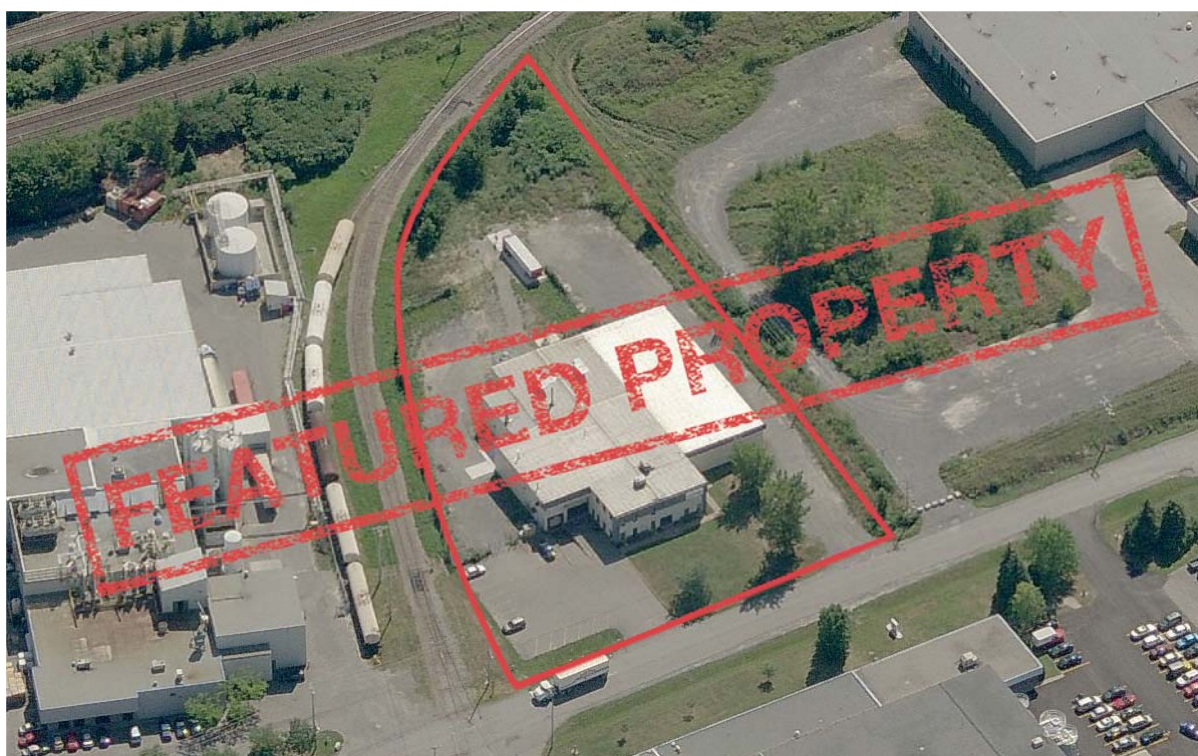


Montréal Industrial Real Estate

Q4 2011



19300 Clark-Graham Avenue

Baie-d'Urfé

26,880 sq ft

Document disponible en français sur demande

DTZ Barnicke (Québec) Ltée, Real Estate Agency

1200 - 1100 René-Lévesque Blvd West
Montréal, Québec H3B 4N4

514 868-1215



For sale or for lease



**16 Richelieu Street
Lacolle**

Multi tenant property
112,343 sq ft
18' and 20' clear
1 ground-level door
4 truck-level doors

For sale



**29 33 Elm Street
Grenville**

Single occupant property
39,826 sq ft
12', 16' and 18' clear
3 ground-level doors
4 truck-level doors



**51 53 Principale Street
Saint-Damase**

Single occupant property
17,410 sq ft
16' and 24' clear
3 ground-level doors



**70 Hymus Blvd
Pointe-Claire**

Single occupant property
91,220 sq ft
24' clear
136 exterior parking stalls



**112 Leacock Avenue
Pointe-Claire**

Single occupant property
17,985 sq ft
16' clear
2 truck-level doors

For lease



**125 du Parc Avenue
Saint-Joseph-de-Beauce**

Single occupant property
116,230 sq ft
13' and 25' clear
7 ground-level doors
3 truck-level doors



**141 Barr Street
Saint-Laurent**

Multi tenant property
22,375 sq ft
18' clear
1 ground-level door
4 truck-level doors



**365 Ch. du Grand Bernier Nord
Saint-Jean-sur-Richelieu**

Single occupant property
19,200 sq ft
12' clear
3 ground-level doors
2 truck-level doors

For sale



**500 Léger Street
Rivière-Beaudette**

Single occupant property
184,268 sq ft
22' and 24' clear
5 ground-level doors
3 truck-level doors



**650 670 McCaffrey Street
Saint-Laurent**

Multi tenant property
29,187 sq ft
18' clear
2 ground-level doors
4 truck-level doors

For sale



**835 Ellingham Avenue
Pointe-Claire**

Single occupant property
17,291 sq ft
18' clear
3 truck-level doors



**888 Montée-de-Liesse
Saint-Laurent**

Single occupant property
± 22,000 sq ft
18' clear
4 ground-level doors
1 truck-level door

For sale



**1173 Cameron Street
Hawkesbury (Ontario)**

Single occupant property
33,736 sq ft
18' clear
1 ground-level door
3 truck-level doors

For sale



**1345 Jacques-Cartier Street S.
Saint-Jean-sur-Richelieu**

Single occupant property
10,491 sq ft
10' and 14' clear
2 ground-level doors
1 truck-level door

For lease



**1375 Newton Street
Boucherville**

Single occupant property
98,633 sq ft
22' clear
1 ground-level door
9 truck-level doors

For sale



**1750 Janelle Street
Drummondville**

Single occupant property
47,752 sq ft
25' clear
5 ground-level doors

INDUSTRIAL PROPERTIES



**1930 1960 52nd Avenue
Lachine**

Multi tenant property
± 30,000 sq ft
19'10" clear
1 ground-level door
2 truck-level doors



**1930 1960 52nd Avenue
Lachine**

Multi tenant property
± 30,000 sq ft
19'10" clear
1 ground-level door
2 truck-level doors



**2101 Trans-Canada Highway
Dorval**

Single occupant property
74,747 sq ft
16', 22' and 27' clear
1 ground-level door
3 truck-level doors

For lease



**2698 Léger Street
LaSalle**

Multi tenant property
± 25,000 – 104,000 sq ft
12' clear
2 truck-level doors

For sale or for lease



**2825 Brabant-Marineau Street
Saint-Laurent**

Single occupant property
81,236 sq ft
18' to 33' clear
7 truck-level doors

Q4 2011



**3105 J.-B.-Deschamps Blvd
Lachine**

Multi tenant property
± 15,000 sq ft
24' clear
2 truck-level doors



**3155 3185 J.-B.-Deschamps Blvd
Lachine**

Single or multi tenant property
± 28,000 – 59,000 sq ft
24' clear
7 truck-level doors

For sale



**3540 Saint-Patrick Street
Montréal**

Single occupant property
58,515 sq ft
10' to 22' clear
3 truck-level doors

For lease



**3765 La Vérendrye Street
Boisbriand**

Single occupant property
43,900 sq ft
24' clear
3 truck-level doors

For sale or for lease



**3950 Hickmore Street
Saint-Laurent**

Single occupant property
48,659 sq ft
10' and 18' clear



**4005 Sartelon Street
Saint-Laurent**

Single occupant property
62,740 sq ft
23' clear
1 ground-level door
8 truck-level doors



**4225 Trans-Canada Highway
Pointe-Claire**

Single occupant property
57,786 sq ft
20' to 28' clear
1 ground-level door
3 truck-level doors



**4400 Hickmore Street
Saint-Laurent**

Single occupant property
79,936 sq ft
24' clear
2 ground-level doors
4 truck-level doors



**4500 Chemin Bois-Franc
Saint-Laurent**

Single occupant property
77,500 sq ft
24' clear
1 compactor door
3 truck-level doors



**4747 Bourg Street
Saint-Laurent**

Multi tenant property
± 15,000 sq ft
16' clear
2 truck-level doors



**4953 de la Côte-Vertu Blvd
Saint-Laurent**

Multi tenant property
19,482 sq ft
19' clear
1 ground-level door
1 truck-level door

INDUSTRIAL PROPERTIES



**5110 Fairway Street
Lachine**

Single occupant property
10,150 sq ft
14' clear
2 truck-level doors



**5353 Thimens Blvd
Saint-Laurent**

Single occupant property
53,878 sq ft
18' and 23' clear
4 truck-level doors



**5800 Thimens Blvd
Saint-Laurent**

Single occupant property
29,621 sq ft
18'10" and 23'9" clear
1 ground-level door
1 truck-level door



**6755 6801 des Grandes-Prairies Blvd
Montréal**

Multi tenant property
281,251 sq ft
22' clear
1 ground-level door
19 truck-level doors



**8489 8491 Ernest-Cormier St.
Anjou**

Single occupant property
137,250 sq ft
11'8" and 16'8" clear
3 ground-level doors
6 truck-level doors



**8515 Henri-Bourassa Blvd W.
Saint-Laurent**

Single occupant property
10,360 sq ft
17' clear
1 ground-level door
1 truck-level door



**8600 8620 Chemin Darnley
Town of Mount Royal**

Multi tenant property
± 7,000 sq ft
15' and 20' clear
2 ground-level doors
2 truck-level doors (1 interior)



**10280 Ray-Lawson Blvd
Anjou**

Single occupant property
85,377 sq ft
17' and 18' clear
1 ground-level door
9 truck-level doors

For lease



18050 Trans-Canada Highway Kirkland

Multi tenant property
24,515 sq ft
25' clear
1 truck-level door

For sale or for lease



19300 Clark-Graham Avenue Baie-d'Urfé

Single occupant property
26,880 sq ft
18' to 20' clear
6 ground-level doors
1 truck-level door



19700 Clark-Graham Avenue Baie-d'Urfé

Single occupant property
124,600 sq ft
32' clear
1 ground-level door
12 truck-level doors

For lease



20675 Industriel Blvd Sainte-Anne-de-Bellevue

Single occupant property
± 25,000 sq ft
21' clear
1 ground-level door
4 truck-level doors



2615 2625 Brabant-Marineau St. Saint-Laurent

Multi tenant property
30 September 2014
36,559 sq ft
21' clear
10 truck-level doors

Land



1000 1100 Port-Royal St. E. Ahuntsic-Cartierville

± 119,000 sq ft
Redevelopment opportunity
Prime location



650 Curé-Labelle Blvd Blainville

142,902 sq ft
Commercial zoning
(C1, C2, C3, C4 including C7)
Fully serviced

Redevelopment



2001 Trans-Canada Highway Dorval

111,078 sq ft
Retail zoning
Prime location

DTZ Barnicke (Québec) Ltée, Real Estate Agency

1200 - 1100 René-Lévesque Blvd West
Montréal, Québec H3B 4N4

Erik Charton, SIOR

Senior Vice-President
Real Estate Broker
514 868-5301
erik.charton@dtzquebec.com

Michael David Owen, SIOR

Senior Vice-President
Chartered Real Estate Broker
514 868-5323
michael.owen@dtzquebec.com

Vincenzo Di Venosa

Vice-President
Chartered Real Estate Broker
514 868-5308
vince.divenosa@dtzquebec.com

Jean-Marc Dubé, SIOR

Vice-President
Chartered Real Estate Broker
514 868-5307
marc.dube@dtzquebec.com

Paul Fischlin

Vice-President
Real Estate Broker
514 868-5303
paul.fischlin@dtzquebec.com

Marc Gervais, B. Comm.

Vice-President, Corporate Services
Chartered Real Estate Broker
514 868-5310
marc.gervais@dtzquebec.com

Brandon Allen

Chartered Real Estate Broker
514 868-5315
brandon.allen@dtzquebec.com

Jean-Philippe Daunais

Chartered Real Estate Broker
514 868-5306
jp.daunais@dtzquebec.com

Vincent Iadeluca

Real Estate Broker
514 868-5317
vincent.iadeluca@dtzquebec.com

www.dtzbarnicke.com